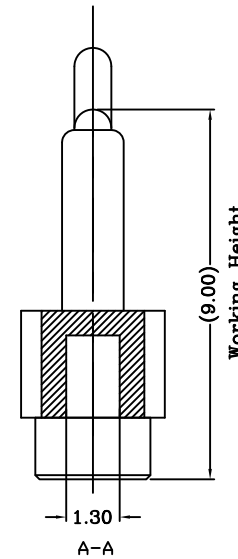
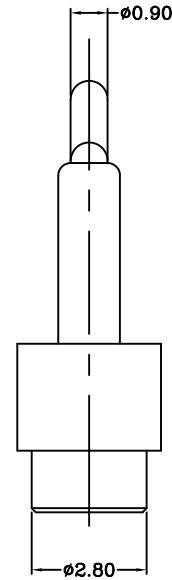
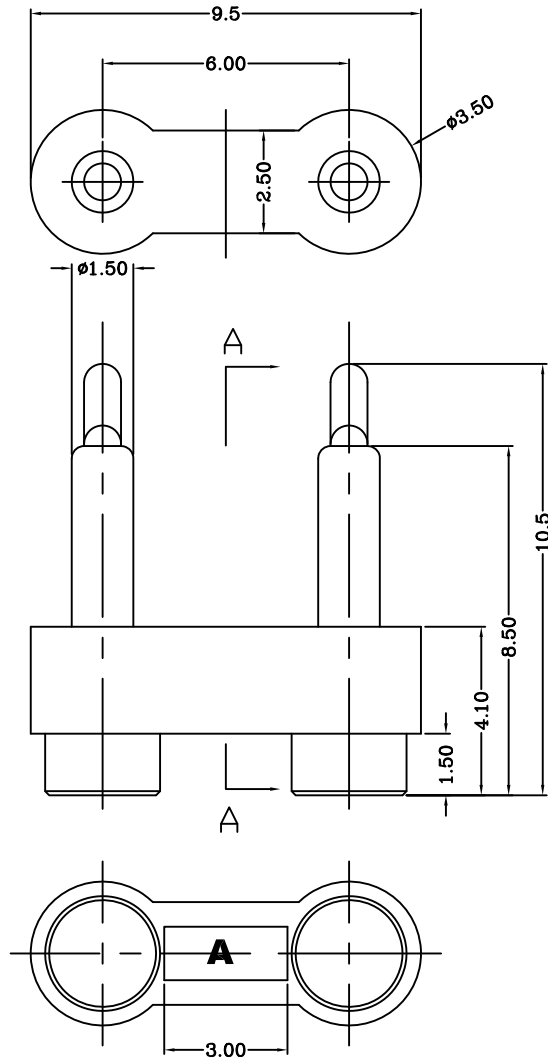


THIS INFORMATION IS CONFIDENTIAL AND IS DISCLOSED TO YOU ON CONDITION THAT NO FURTHER DISCLOSURE IS MADE BY YOU TO OTHER THAN TOP-LINK PERSONNEL WITHOUT WRITTEN AUTHORIZATION FROM TOP-LINK LTD.

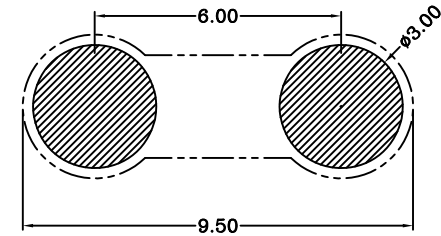
DWG NO.
C-100036-2



USED ON
-



Notes:
1 Material, Housing: PA 4.6 (30% Glass Filled)
Color Black.
Contact: Brass
2 Mechanical demands:
Full stroke: 2.7mm
Plating Plunger: Min 0.4um Au over 2.5um Ni
Plating Body: Min 0.1um Au over 1.4um .



Recommended PCB Layout

LDC	-
DIST	-

	Change Height		2007/04/11
LTR	REVISION RECORD	APVD	DATE

DIMENSIONS IN MM
TOLERANCES UNLESS
OTHER SPECIFIED
0 = ±-
0.0 = ±0.15
0.00 = ±0.10
0.000 = ±
ANGLE: ±1°
SURF TEXTURE: 3.2/
REMOVE BURRS. BREAK
SHARP EDGES R0.05 MAX
DO NOT SCALE PRINT

MATERIAL		HT TR		FIN	
1		-		- ✓	
DWN Benny		APVD -		Top-Link Electronics Ltd.	
CHK		REL		Electronics	
NAME BATTERY POGO CONNECTOR 2 POSITIONS (PGC-1.5-10.5-R-2P-6.0PH)					
SCALE 1:1	A4	DWG NO. C-100036-2		SHEET 1 OF 1	REV B

100036-2
PART NUMBER

4

3

2

1